

Supporting VT State GU Students in the 21st Century

VT State GEAR UP GUIDE Scholars Program:

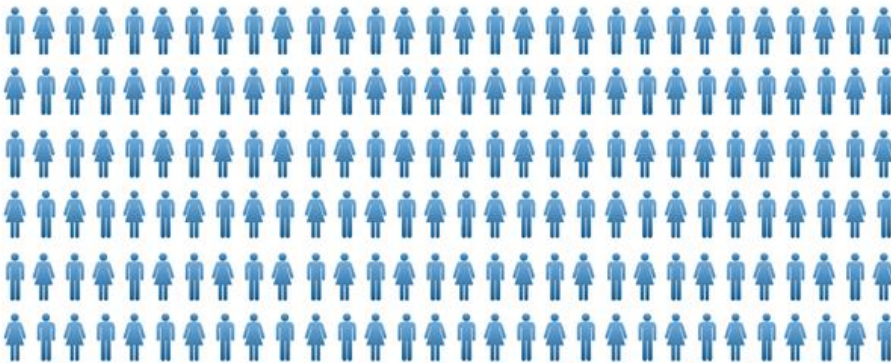
Dr. Laurie Berryman, Ed.D.

Dr. Julie Welkowitz, Ph.D.

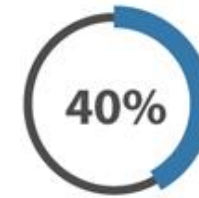
The Importance of Freshman Year

Statistics of the COLLEGE DROP-OUT

3 million STUDENTS enroll in some form of higher education **each year**



of students **dropped out** of college

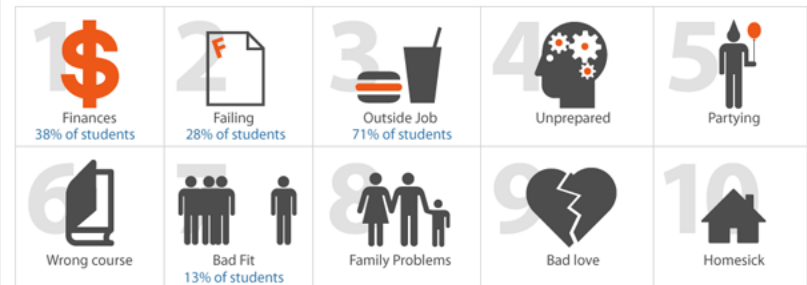


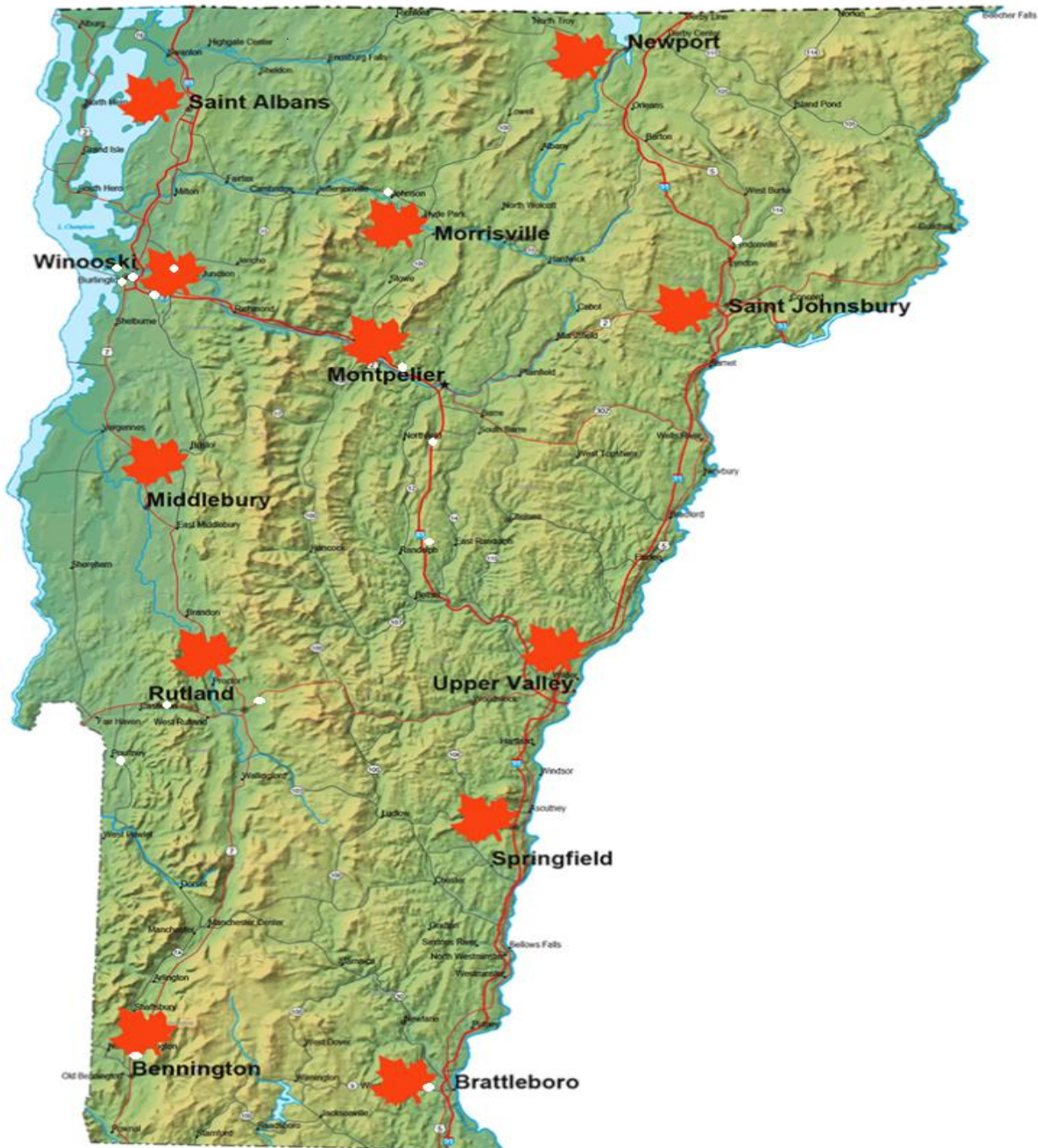
will not get a degree



of students at **public institutions** drop out

Top 20 Reasons for DROPPING OUT





APR Reporting: 1st year PSE

- **Enrollment Data**

- PSE Enrollment

- In-State vs Out-of-State Enrollment

- Priority vs Cohort #s

- Developmental coursework

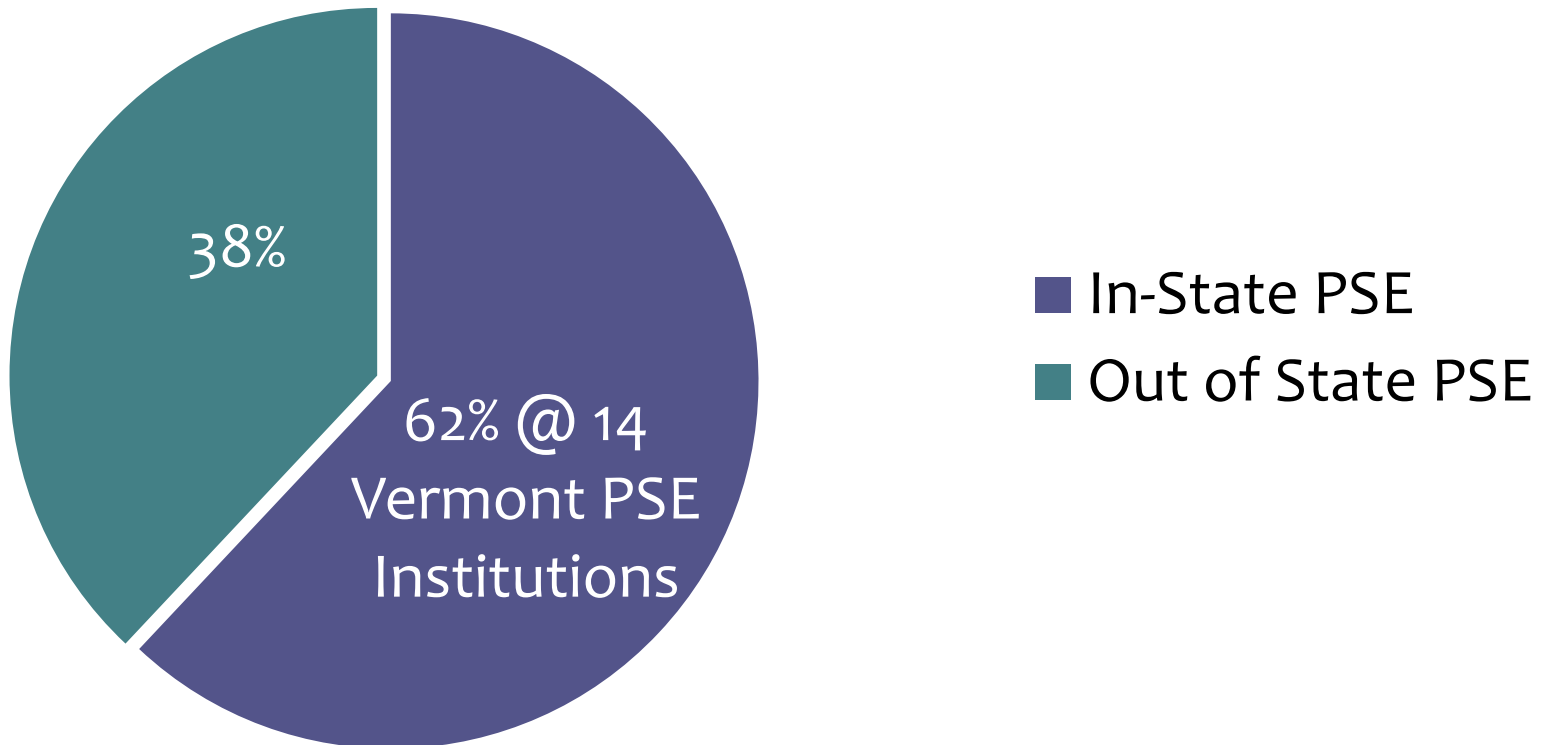
- Vermont state institutions only

- **Persistence Data**

- **Service Data**

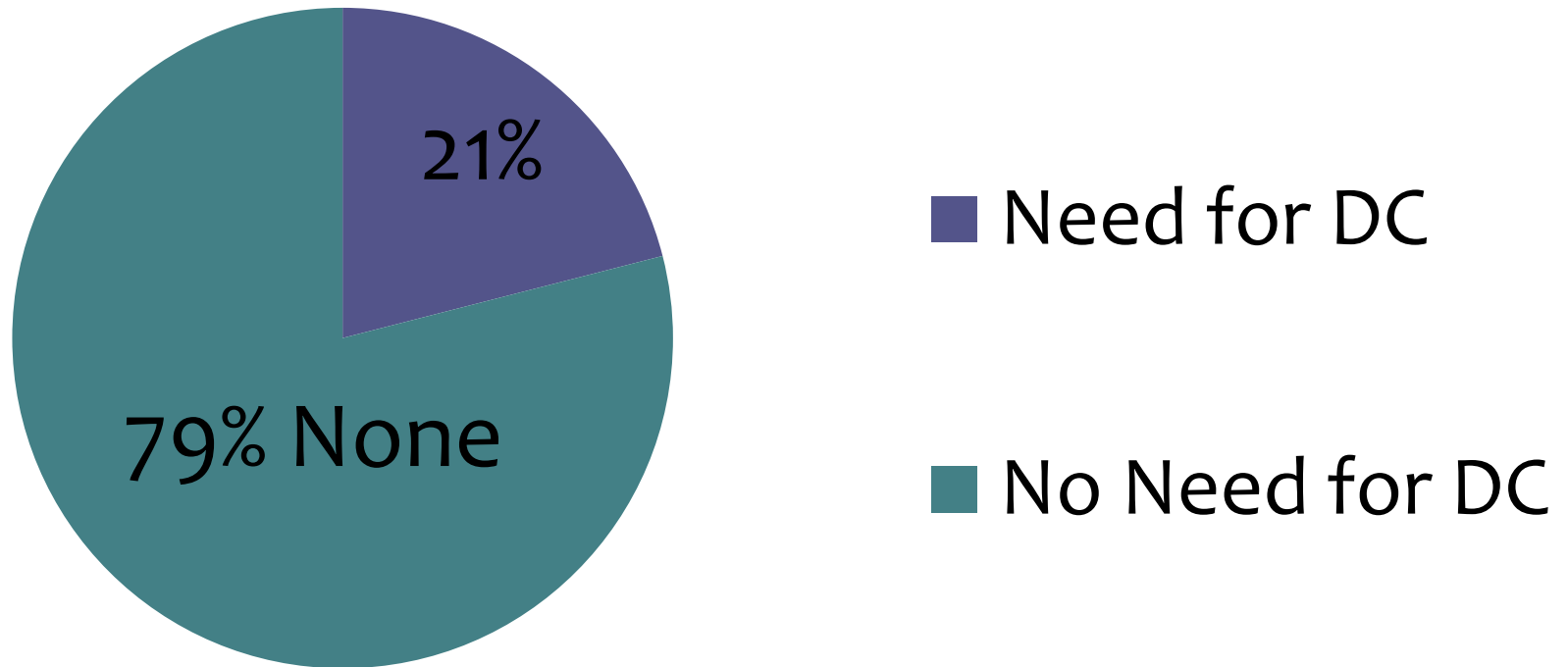
Where Do Vermont Students Go For Postsecondary Education?

Postsecondary Education



Need for Developmental Coursework at Vermont State Colleges for GU Students

Developmental Coursework



VERMONT GEAR UP: POSTSECONDARY PERSISTENCE

*APR Objective: 65% of VSGU students
who enroll in PSE will persist to 3rd
semester:*

Class of 2013: 66.5%

Class of 2014: 74.5%

Services to Students

On-campus
Meetings

Peer
Mentoring

Financial Aid
workshops

Collaboration
with SSS-
peer tutoring

Social Media

HESA Intern
support

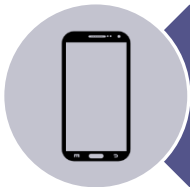
Services to Students attending college out-of-State



Support by e-mail, text, phone



Facebook group



Text message platform



Provide in person meetings when requested in state

Tracking Service Data

- **Counseling Summary Report**
 - In-person counseling
 - Email, text, Facebook
 - Phone contact
 - Summer Transition: counselor contact, receptions
- **Student Support Services (On Campus)**
- **Peer Mentoring/Peer Tutoring**

GUIDE Survey Data

- Annual pre & post surveys
- Completed by 1st year PSE GUIDE students
- Content: plans, resources, obstacles
- May 2014 Survey Results:
 - *Most important reason for returning in Fall?*
 - *affordability, financial support (77%)*
 - *What was most helpful in preparing you for first year of college?*
 - *GEAR UP outreach counselor (56%)*
 - *HS academic coursework (46%)*
 - *Financial planning (41%)*

Future Evaluation Plans

- **Focus Forums**
- **Longitudinal Databases**
 - Collaboration with the Vermont Agency of Education → access to statewide database
 - HS class of 2017:
 - *GU High School Services → PSE Continuation and Persistence*
 - HS class of 2014:
 - *GU PSE services → PSE persistence and PSE completion*

QUESTIONS

Contact information:

Laurie Berryman

berryman@vsac.org

Julie Welkowitz

welkowitz@vsac.org